



## SOUND OF SWISS - 2026

08 Days / 07 Nights

Central Switzerland (1N) – Zurich (1N) – Central Switzerland  
(1N) – Meiringen (2N) – Geneva (2N) – Central Switzerland (1N)



**State Express Global Voyages-** 1<sup>st</sup> Floor, Bhanot House, 17, Community Centre,  
Gulmohar Enclave Extension, New Delhi – 110049  
011-47674020 | [info@statexp.in](mailto:info@statexp.in)





## DAY 01: ARRIVE IN SPLENDID SWITZERLAND



Welcome to Switzerland, a mountainous Central European country, home to numerous lakes, villages and the high peaks of the Alps. Upon arrival at the Zurich International airport complete the emigration formalities and proceed outside where you will be warmly welcomed by our Travel Professional and later proceed to your hotel.

Overnight at the hotel in Central Switzerland. (Dinner)

## DAY 02: VISIT TO RHINE FALLS WITH FUNICULAR RIDE & ORIENTATION TOUR OF ZURICH

Today relax in your van as we drive to Schaffhausen, where you see the magnificent Rhine Falls – Europe's biggest and most spectacular falls. The Rhine Falls have a drop of around 23 metres but are 150 metres wide making this a very large and impressive sight.

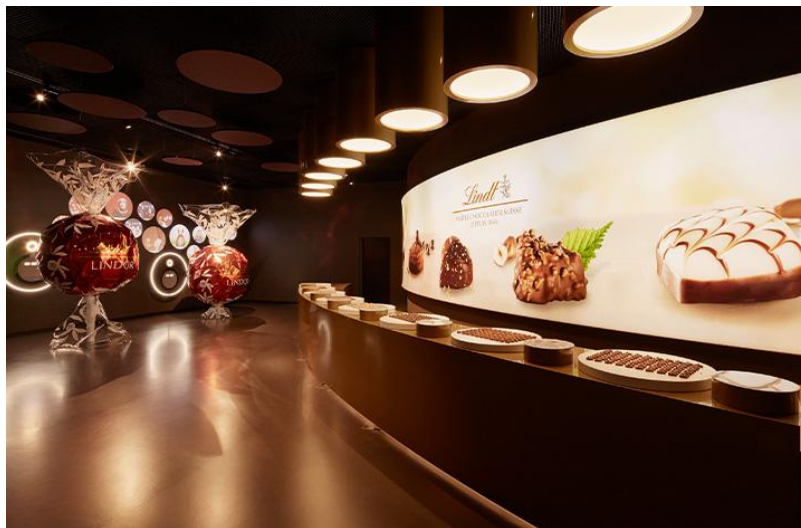


**State Express Global Voyages-** 1<sup>st</sup> Floor, Bhanot House, 17, Community Centre,  
Gulmohar Enclave Extension, New Delhi – 110049  
011-47674020 | [info@statexp.in](mailto:info@statexp.in)





Later drive to our next destination the enchanting Lindt Home of Chocolate. As you step into the lobby of this building, you'll immediately be captivated by its most prominent feature – the world's largest chocolate fountain. Standing at an impressive 9.3 meters tall and weighing 3 tons, this fountain flows with 1,500 liters of delectable chocolate.



Prepare for an immersive and interactive chocolate tour that delves into the rich Swiss chocolate heritage. Immerse yourself in the world of chocolate, uncovering its origins and significance. The multimedia chocolate tour will unveil intriguing facts about chocolate, providing a multisensory experience. From its creation to its

cultural importance, this tour will engage all your senses, and you'll have the opportunity for unlimited chocolate tasting.

Next we proceed to discover the sights of Zurich. Stroll through the beautiful city and see the business and financial centre, Bahnhofstrasse, the most important museums, a section of the Old Town, Münster Square entrance to the pedestrian area, historical Limmatquai, the University district, residential areas, beautiful hillside villas on the Zurichberg, as well as recreation areas and views of the Alps from Zurich's vantage points. Following our tour, we take the Polybahn funicular in Zurich is a historic and iconic transportation system that operates as a cable railway. The Polybahn offers a fun and unique experience. It provides beautiful views of Zurich and the surrounding area as it ascends and descends the steep hill.



Overnight at the hotel in Central Switzerland. (Breakfast, Lunch, Dinner)

**State Express Global Voyages-** 1<sup>st</sup> Floor, Bhanot House, 17, Community Centre, Gulmohar Enclave Extension, New Delhi – 110049  
011-47674020 | [info@statexp.in](mailto:info@statexp.in)





### DAY 03: LUCERNE ORIENTATION TOUR WITH VISIT TO MT. TITLIS

Today proceed on an orientation tour of Lucerne one of most beautiful cities in Switzerland. Visit the Lion Monument, Kapell Brucke with some free time to shop for famous Swiss watches, knives and chocolates.



Later enjoy a scenic and relaxing cruise on the lake of Lucerne. We continue to visit an amazing scenery, a once in a lifetime experience with an exhilarating tip to the top of Mt Titlis at 3020 metres on various cable cars including Rotair, the world's first revolving cable car. Get a breath taking unrestricted 360 degrees stunning view of the dazzling snow caped peak, deep crevasses and pristine white snow fields, dotted with massive ice boulders from every angle. Do not forget to visit the "Cliff Walk" the highest suspension bridge in Europe along the cliff of Mt.Titlis.

Overnight at the hotel in Meiringen. (Breakfast, Lunch, Dinner)

### DAY 04: SCENIC EXCURSION TO JUNGFRAUJOCH WITH VISIT TO TRUMMELBACH FALLS

Get set for a memorable magical alpine excursion to Jungfrauoch – The Top of Europe, a high-point of your tour.

**State Express Global Voyages-** 1<sup>st</sup> Floor, Bhanot House, 17, Community Centre,  
Gulmohar Enclave Extension, New Delhi – 110049  
011-47674020 | [info@statexp.in](mailto:info@statexp.in)





First proceed to Grindelwald Terminal. The new 3S-Bahn Eiger Express takes you from the Grindelwald Terminal to the Eigergletscher station in just 15 minutes. There you board a cogwheel train to reach the highest railway station in Europe at 11,333 feet – a world of eternal ice and snow. Visit the Ice Palace where artistes create their work of art in ice. Visit the Sphinx observatory deck to experience a breath-taking panoramic view of the longest glacier in the Alps - Aletsch Glacier.



Later proceed for an orientation tour of Interlaken and explore traditional aspects of Swiss culture in authentic settings and discover the beauty and history of Interlaken and its surroundings. Later, visit Trummelbach Falls – Europe's largest subterranean water falls. Falls are a series of ten glacier-fed waterfalls inside the mountain made accessible by a tunnel-funicular, built 1913, stairs, and illumination. They alone carry the meltwater of the glaciers from the Jungfrau down to the valley - up to 20,000 liters of water per second.



Overnight at the hotel in Meiringen.  
(Breakfast, Lunch, Dinner)

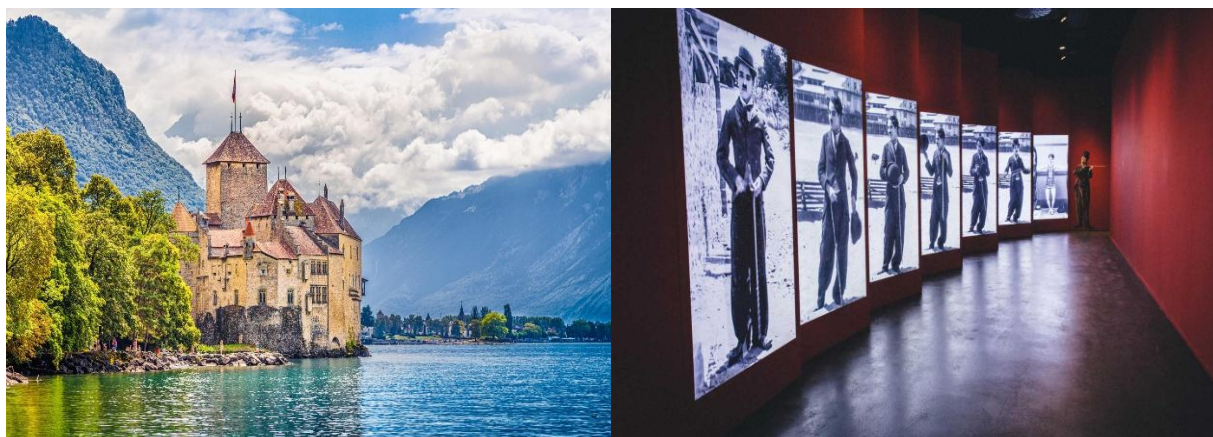
## DAY 05: RELAXING TRAIN RIDE TO MONTREUX & CHAPLIN'S WORLD TOUR

Today after your breakfast, we proceed to train station and board the GoldenPass Line which is a scenic train route in Switzerland that takes you from Interlaken to Montreux, offering breathtaking views of the Swiss Alps, pristine lakes, charming villages, and lush landscapes along the way. It is considered one of the most picturesque train journeys in Switzerland. Later we proceed to Montreux - a picturesque town located on the shores of Lake Geneva in Switzerland. It is known for its stunning natural beauty and cultural attractions which will give you a taste of the town's rich history, natural beauty, and cultural significance.

**State Express Global Voyages-** 1<sup>st</sup> Floor, Bhanot House, 17, Community Centre,  
Gulmohar Enclave Extension, New Delhi – 110049  
011-47674020 | [info@statexp.in](mailto:info@statexp.in)







Continue to Chaplin's World, an engaging museum that brings the life and work of Charlie Chaplin to life through interactive exhibits and film sets, set within his former home. Return to Montreux for an orientation tour, where you'll stroll along the flower-lined lakeside promenade, admire the bronze statue of Charlie Chaplin, and catch glimpses of Château de Chillon from the distance. The tour also showcases the town's Belle Époque architecture and its vibrant cultural atmosphere. Drive to Geneva and check in to your hotel.

Overnight at the hotel in Geneva. (Breakfast, Lunch, Dinner)

## DAY 06: EXPLORE ZERMATT AT LEISURE & TRANSFER TO GENEVA

Today after breakfast, checkout from your hotel and proceed to Zermatt. Zermatt lies at the foot of the Matterhorn. It is a mountain which known for its almost perfect pyramid shape. The town's touristic development is closely linked to what is most probably the world's most famous mountain. The vacation destination is a car-free zone, has preserved its original



character and offers nearly unlimited possibilities as far as excursions are concerned and that is one of the best things about this charming Alpine locations main street. Feel free to stroll around this exquisite town of Zermatt.

**State Express Global Voyages-** 1<sup>st</sup> Floor, Bhanot House, 17, Community Centre,  
Gulmohar Enclave Extension, New Delhi – 110049  
011-47674020 | [info@statexp.in](mailto:info@statexp.in)





Later, we return to the cosmopolitan city of Geneva, where you'll have free time to enjoy lunch on your own, exploring the city's culinary offerings. The day proceeds with an orientation tour of Geneva, highlighting iconic landmarks such as the United Nations headquarters, the Jet d'Eau, and the charming Old Town.

Overnight at the hotel in Geneva. (Breakfast, Lunch, Dinner)

### DAY 07: VISIT TO OLYMPIC MUSEUM AND GRUYÈRE CHEESE FARM

Begin your day with breakfast at the hotel before checking out and departing for the picturesque town of Gruyère, where you'll enjoy a visit to La Maison du Gruyère Cheese Factory—a delightful experience uncovering the secrets of traditional Swiss cheese-making.



From Gruyère, continue your journey to Switzerland's charming capital, Bern. Upon arrival, enjoy a hearty lunch at an Indian restaurant, followed by an orientation tour of Bern's UNESCO-listed Old Town. Stroll past medieval arcades, the iconic Zytglogge clock tower, and the Federal Palace. After the tour, enjoy free time to explore the boutiques, fountains, or simply relax at a local café. Later proceed to your hotel in Central Swiss and check in.

Overnight at the hotel in Central Switzerland. (Breakfast, Lunch, Dinner)

### DAY 08: DEPARTURE

As your memorable holiday ends, today marks the day to return home.

Bid farewell to the wonderful new friends you've made during this tour. It's time to check out and make your way to the airport on your own, carrying with you the pleasant memories of your European journey—a treasure you'll cherish for a lifetime. Safe travels! (Breakfast)

**State Express Global Voyages-** 1<sup>st</sup> Floor, Bhanot House, 17, Community Centre,  
Gulmohar Enclave Extension, New Delhi – 110049  
011-47674020 | [info@statexp.in](mailto:info@statexp.in)







“TOUR END”

**State Express Global Voyages-** 1<sup>st</sup> Floor, Bhanot House, 17, Community Centre,  
Gulmohar Enclave Extension, New Delhi – 110049  
011-47674020 | [info@statexp.in](mailto:info@statexp.in)

